



Dalton Highway, Alaska, USA

PRUDHOE BAY EXCURSION

Ride to the Top of the North American Continent

Our special *Prudhoe Bay Excursion* is in a class by itself! Ride to the Arctic Circle, then continue on for another couple of hundred miles to Deadhorse, Alaska. Like our trips to Ushuaia, Argentina and Norway's North Cape, Prudhoe Bay is a location that all serious motorcycle world travelers have on their "bucket list".

Key attractions include:

- The Matanuska Glacier. At 27 miles long and 4 miles wide, it's the largest glacier in North America accessible by motorcycle.
- A ride on the Dalton Highway across the Arctic Circle and onto Deadhorse, Alaska -the northernmost point in North America to which it's possible to ride a motorcycle.
- A night at Denali National Park from which we can see Mt. McKinley, the highest mountain in North America.
- Bear, moose, caribou, elk and other wildlife which can be seen from the seat of your motorcycle.



On the Way to Prudhoe Bay



Arctic Circle

9 days, Begin/End in: Anchorage, Alaska

July 23 - July 31, 2022

July 22 - July 30, 2023

ITINERARY

- Day 1** - Arrive Anchorage, USA
Day 2 - Anchorage to Copper Centre, ~195 miles
Day 3 - Copper Centre to Fairbanks, ~260 miles
Day 4 - Fairbanks to Coldfoot, ~255 miles
Day 5 - Coldfoot to Deadhorse, ~240 miles
Day 6 - Deadhorse to Coldfoot, ~240 miles
Day 7 - Coldfoot to Denali, ~375 miles
Day 8 - Denali to Anchorage, ~240 miles
Day 9 - Depart Anchorage, USA

Total ~1,805 miles

PRICING

Rider: \$5,950

Co-rider: \$4,500

Single Room Supplement: \$950

Booking Deposit: \$800 per person

Includes BMW F700/750GS. Check our website for a full list of available bike upgrades and low seat/suspension options.

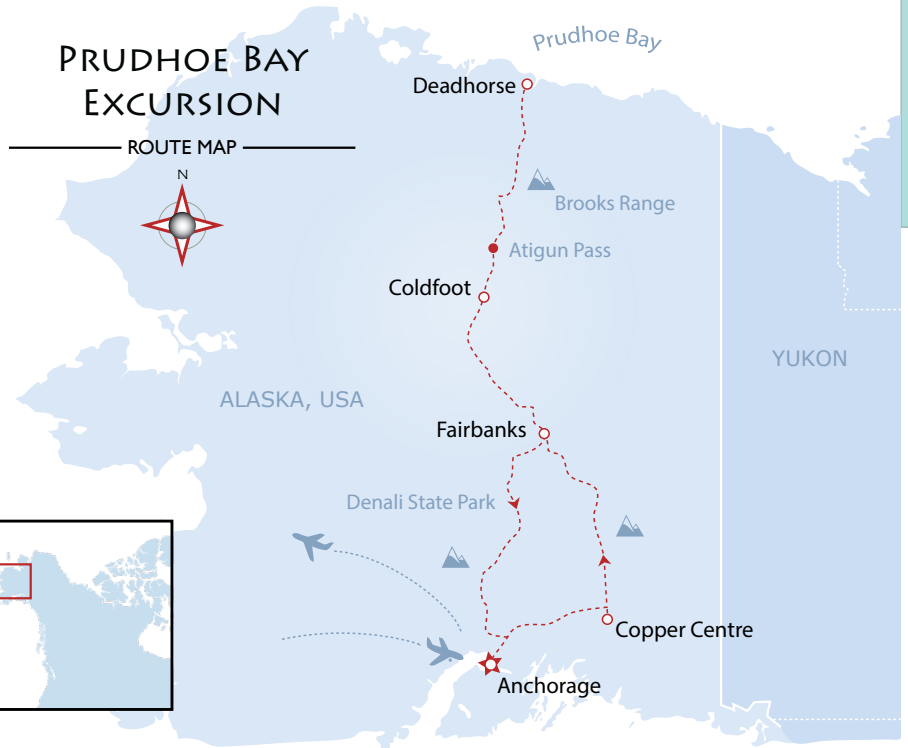
In addition to the standard inclusions on all of our premium tours, the tour price includes all breakfasts and 8 dinners.

RIDING CONDITIONS

CAUTION! - The *Prudhoe Bay Excursion* is an **EXTREME** Adventure and should only be undertaken by riders with experience on unpaved roads in a variety of adverse weather conditions. The trip includes riding several hundred miles on unpaved roads which are sometimes slick due to rain, sleet and occasionally snow. Prudhoe Bay riders will be responsible for increased deposits to cover potential damages to the motorcycle.



Deadhorse, Alaska, USA



Did You Know?

Ayres Adventures offers four "ends of the earth" Adventures:

- *Ushuaia - southernmost point in the world to which it's possible to ride*
- *Norway's North Cape - the northernmost point in the world to which it's possible to ride*
- *Prudhoe Bay - the northernmost point in North America*
- *Cape L'Agulhas - the southernmost point on the African continent*



Matanuska Glacier, Alaska, USA